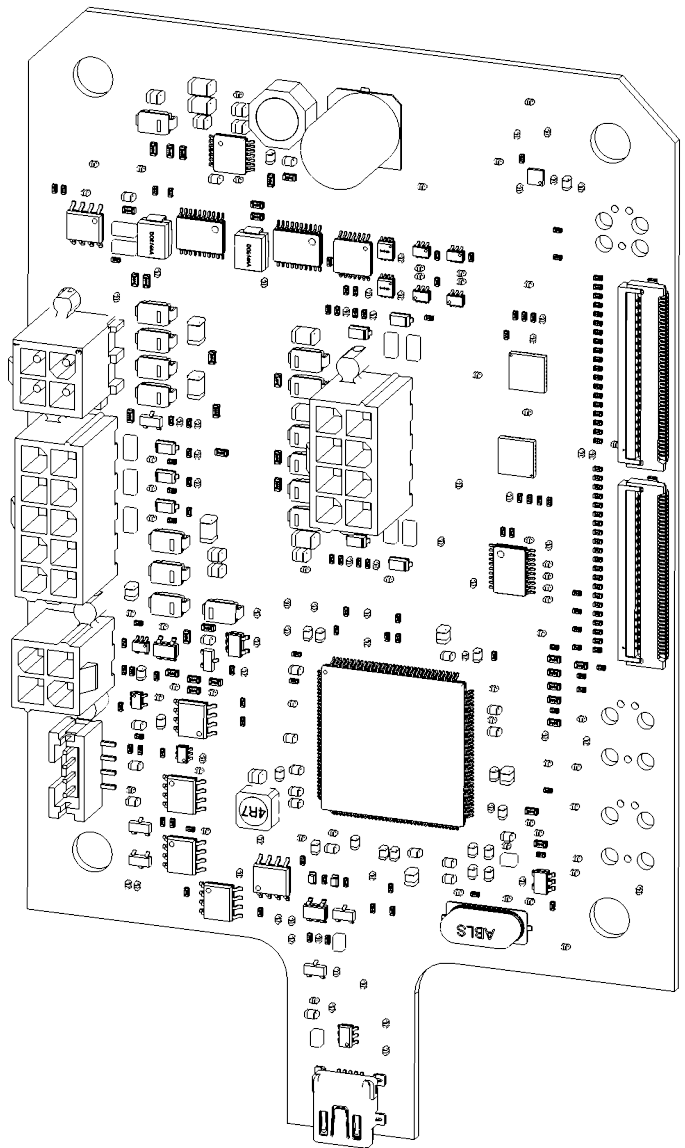


REVISIONS				
ZONE	REV.	DESCRIPTION	DATE	APPROVED
B7, E7	02	1) CHANGE BOM TO BOM1261320revF 2) UPDATE HARDWARE REVISION 3) CHANGE FCT TO REV 15	12/05/2025	



NOTES:

- ② 1) PCB ASSEMBLY TO BE BUILT USING TENNANT QPL BILL OF MATERIAL: **BOM1261320revF**
- 2) WORKMANSHIP STANDARD PER: IPC-J-STD-001E, IPC-A-610E, CLASS 2
SOLDERING AND ELECTRICAL CONNECTIONS : IPC-S-815B
OR MORE CURRENT VERSIONS OF THESE STANDARDS
- 3) APPLY LABEL OR LABELS WITH THE FOLLOWING INFORMATION:
HUMAN READABLE TENNANT PART NUMBER AND REVISION
NOTE: THIS NUMBER AND REVISION SHOULD MATCH THIS RELEASED TENNANT DRAWING
HUMAN READABLE MANUFACTURER'S LABEL WITH SERIAL NUMBER
BARCODE CONTAINING SERIAL NUMBER
NOTE: LINEAR OR 2D BARCODE ACCEPTABLE
NOTE: 2D MATRIX DIMENSIONS TO BE NO SMALLER THAN 4MM BY 4MM
PLACE LABELS SO THEY ARE VISIBLE FROM THE TOP OF THE ASSEMBLY
- 4) CONFORMAL COATING TO BE APPLIED TO TOP AND BOTTOM OF THE PCB
- ALL MOUNTING HOLES TO BE MASKED OFF AT A MIN DIAMETER OF 9MM
- NO COATING TO BE APPLIED TO CONNECTORS J3, J4, J5, J6, J7, J8, J9, J10, J12, J14, J18
- COATING TO FOLLOW QPL Q50000-001
- 5) EACH ASSEMBLY TO BE ICT AND FUNCTIONALLY TESTED. FUNCTIONAL TEST PER SPEC: **FCT_RTOS UI_rev15**
- 6) ASSEMBLY TO BE MANUFACTURED PER RoHS/LEAD FREE STANDARDS
- 7) REFER TO PCB MANUFACTURING NOTES ON FABRICATION LAYER OF GERBERS
- 8) U22 TO BE PROGRAMMED WITH FIRMWARE FILE: **Q30119-009_T350_RT10xx_Production_Image_1.2.4.241.bin**
9. APPLY NON-CORROSIVE PCB-SAFE RTV AROUND C1
MINIMUM BEAD DIAMETER 3MM
APPROVED RTV MATERIALS LISTED UNDER Q50001-001
- 10) ALL DIMENSIONS ARE FOR REFERENCE ONLY
- ② 11) FUNCTIONAL CIRCUIT TEST
HARDWARE REVISION (FOR REFERENCE ONLY)
- DECIMAL: 4
- BINARY: 0100

ECO CONSULTATION

MATERIAL SPECIFICATIONS: SEE PARTS LIST		OTHER TREATMENTS AND FINISHES NOTED		PAINT - COLOR NONE		GLOSS		PERFORMANCE		ACCEPTANCE		CHANGED BY: BRETT PAULSEN	DATE: 12/05/2025	REV 02	ECO	WELDING NOTATION IN ACCORDANCE WITH AWS A2.4-RS	UNLESS OTHERWISE SPECIFIED DIMENSION TOLERANCING IN ACCORDANCE WITH ASME Y14.5-2009 ALL UNTOLERANCED DIMENSIONS ARE CONTROLLED BY:	PRIMARY DIMENSIONS ARE METRIC. REFERENCE DIMENSIONS WITH BRACKETS ARE INCH. UNLESS OTHERWISE SPECIFIED ALL DIMENSIONS ARE AFTER TREATMENTS AND FINISHES.	PROPRIETARY INFORMATION MAY NOT BE REPRODUCED OR DISCLOSED TO OTHERS WITHOUT WRITTEN PERMISSION OF TENNANT COMPANY.	DWG D SIZE	PART NUMBER 1261320
PART NAME: CIRCUITBOARD [UI, RTOS]												DES: BRETT PAULSEN	02/22/2022				X.X ±0.8 ±[.03] X.XX ±0.25 ±[.010] X.XXX ±0.125 ±[.0049] ANGLES ±05°			SHEET 1 OF 1	

